

(D)

**Montage-
anleitung**
**Tagfahrlicht/
Positionslicht**
Steuergerät

(GB)

**Mounting
instructions**
**Daytime running
light/Position
light Control unit**

(F)

**Instructions de
montage**
**Feu diurne/
Feu de position**
Calculateur

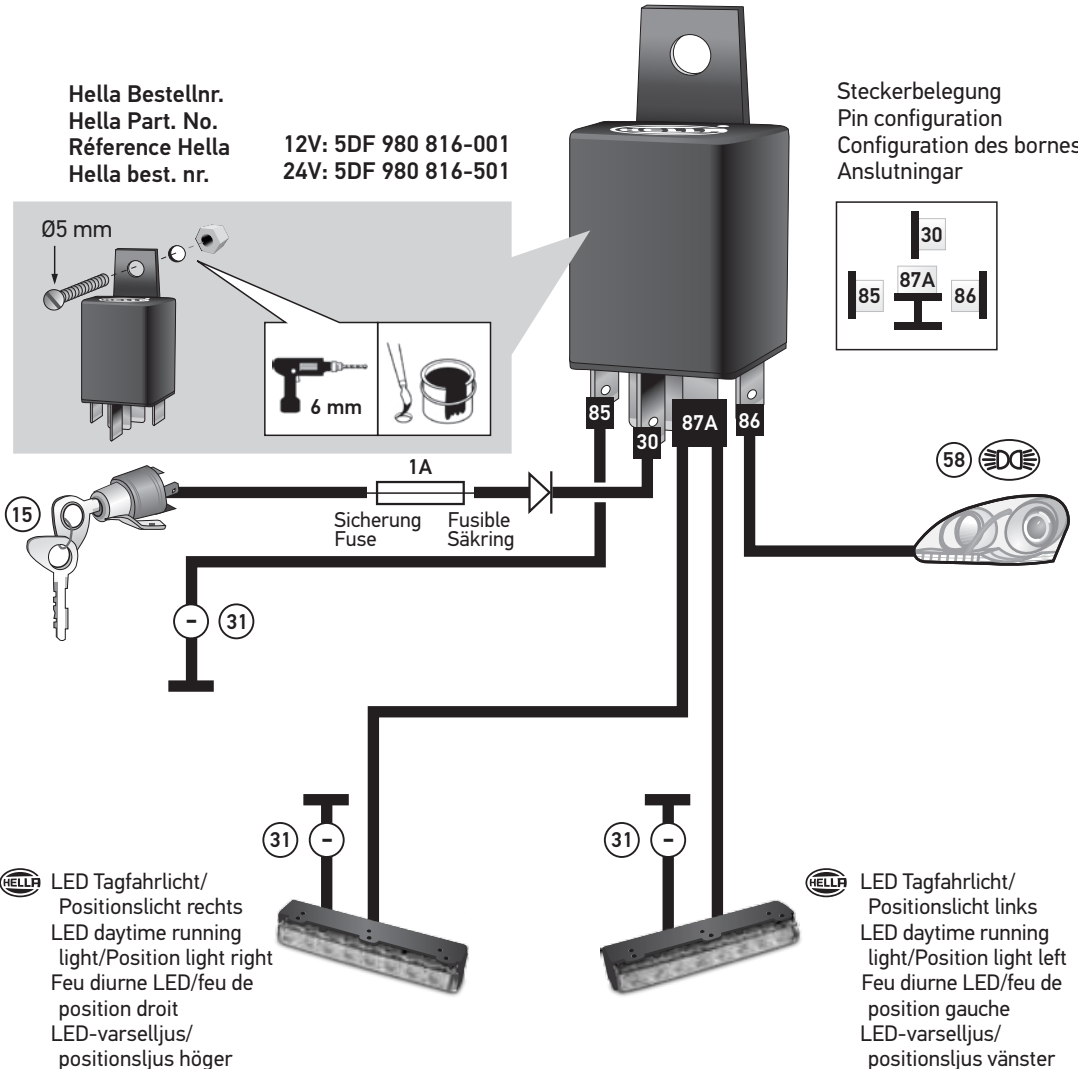
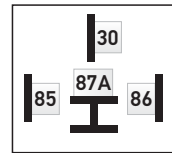
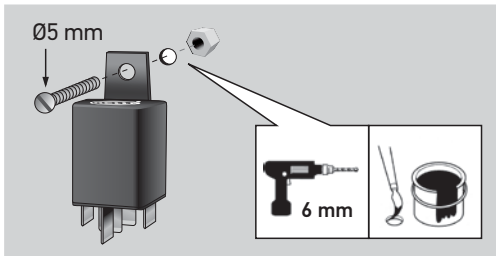
(S)

**Monterings-
anvisning**
**Varselljus/
Positionsljus**
Kontrollenhet

Hella Bestellnr.
Hella Part. No.
Référence Hella
Hella best. nr.

12V: 5DF 980 816-001
24V: 5DF 980 816-501

Steckerbelegung
Pin configuration
Configuration des bornes
Anslutningar



HELLA LED Tagfahrlicht/
Positionslicht rechts
LED daytime running
light/Position light right
Feu diurne LED/feu de
position droit
LED-varselljus/
positionsljus höger

HELLA LED Tagfahrlicht/
Positionslicht links
LED daytime running
light/Position light left
Feu diurne LED/feu de
position gauche
LED-varselljus/
positionsljus vänster



(NL)

**Montage-
handleiding**
**Dagrijlicht/
Positie licht**
Regeleenheid

(E)

**Instrucciones de
montaje**
**Luz diurna/Luz
de posición**
Unidad de control

(I)

**Instruzioni di mon-
taggio**
**Luce per di marcia
diurna/Luce di
posizione Centralina**

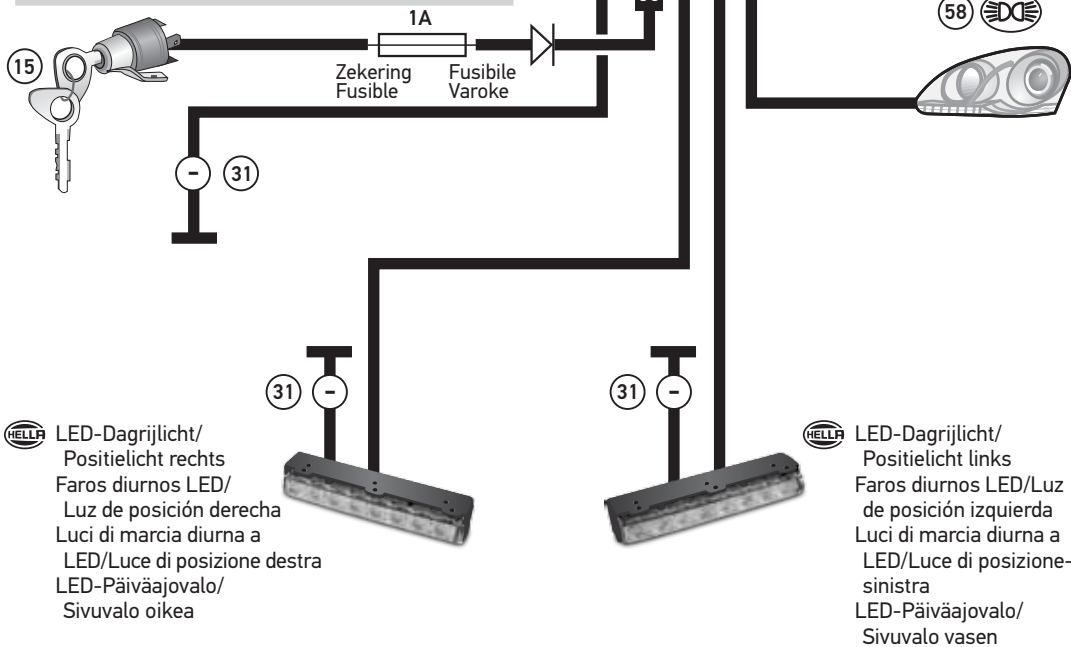
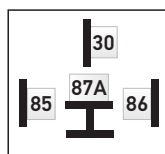
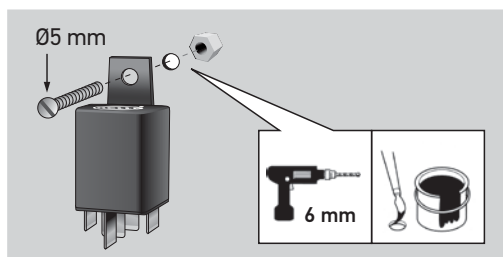
(FIN)

Asennusohje
Valojen
**Päiväajovalo/
Sivuvalo**
Ohjainlaite

Hella Betelnr.
Nº. De pedido Hella
No d'ordine Hella
Hella - nro

12V: 5DF 980 816-001
24V: 5DF 980 816-501

Stekkeropstelling
Disposición de clavijas
Disposizione attachi
Navoitus



HELLA LED-Dagrijlicht/
Positielicht rechts
Faros diurnos LED/
Luz de posición derecha
Luci di marcia diurna a
LED/Luce di posizione destra
LED-Päiväajovalo/
Sivuvalo oikea

HELLA LED-Dagrijlicht/
Positielicht links
Faros diurnos LED/Luz
de posición izquierda
Luci di marcia diurna a
LED/Luce di posizione-
sinistra
LED-Päiväajovalo/
Sivuvalo vasen

