



PI 1762
For technical personnel only!
1/1

PRODUCT INFORMATION

THROTTLE VALVE 7.03703.38.0/39.0

DIFFERENCE: VACUUM CONNECTION

The two throttle valves 7.03703.38.0 and 7.03703.39.0 are identical technically. The throttle valve 7.03703.38.0 also has a vacuum connection. Competitors and vehicle manufacturers (OE) only offer the version with vacuum connection (036 133 062 L, 408-238-321-006Z). Depending on the vehicle (see table), you may have to seal the vacuum connection with an additional rubber cap and a hose clamp (only available from OE).

MOTORSERVICE STILL OFFERS BOTH VERSIONS.

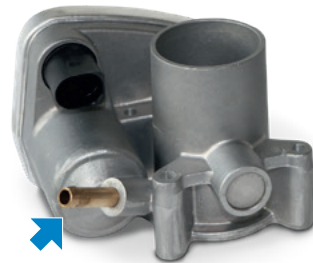
ADVANTAGES:

- no sealing of the vacuum connection required
- no potential leakage
- no additional components need to be purchased from OE

NOTE:

Please note the exact distinction according to chassis number, engine ID code and model year.

The throttle valves must be “taught in” after installation. Always observe the instructions given by the vehicle manufacturer.



Throttle valve
7.03703.38.0 with
vacuum connection



Throttle valve
7.03703.39.0
without vacuum
connection

| Suitable for | Model | Pierburg no. | Replacement for | Ref. no.* |
|--------------|---|--------------|-----------------|------------------|
| Seat | Leon/Toledo II 1.4 | 7.03703.38.0 | 7.03703.01.0 | 036 133 062 L |
| Škoda | Octavia I 1.4 | | | 408-238-321-006Z |
| Volkswagen | New Beetle/Bora/Golf IV/Golf V 1.4 | | | |
| Audi | A2 1.4 | 7.03703.39.0 | 7.03703.09.0 | 036 133 062 B |
| Seat | Cordoba 1.2/1.4; Ibiza IV 1.2; Ibiza III/IV 1.4, Inca 1.4 | | | 036 133 062 N |
| Škoda | Fabia I 1.2/1.4 | | | 408-238-321-007Z |
| Volkswagen | Polo 1.2/1.4, Caddy II 1.4, Lupo 1.4 | | | |

* The reference numbers given are for comparison purposes only and must not be used on invoices to the consumer.