



# SENSORS

## VEHICLE ELECTRONICS

**Delphi sensors** set the benchmark for **quality** and **reliability**, meeting the **highest OE standards**. This **advanced portfolio** optimizes **emissions, fuel efficiency**, and **driveability**, while being built to withstand the toughest conditions. With **comprehensive support** and resources available for technicians, Delphi sensors are the **trusted choice** for **enhancing vehicle performance**.

### OE EXPERTISE

Developed to **stringent OE** standards and **rigorously tested**, ensure **consistent** and **reliable performance**

### LEADING EUROPEAN COVERAGE

**#1 OEM coverage across Europe:**  
MAF | O2 | DPF | ABS | Crankshaft

### WORKSHOP SOLUTIONS

From diagnostics to tech support...  
**...We've got your back!**

# Delphi

[delphiaftermarket.com](https://delphiaftermarket.com)



➔ PHINIA



# SENSORS



## MASS AIRFLOW SENSORS

Respond quickly to changing engine conditions – typically less than **15 milliseconds** to respond to **90%** of a flow change

## EGTS

Measure temperatures between **-40°C** and **900°C**, detecting jumps of **300°C** in just **11 milliseconds**

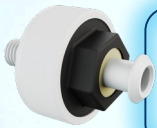


## CAM/CRANK SENSORS

Engineered to maximise the **signal-to-noise ratio**, optimising valve timing to **boost power** at **higher engine speeds**

## DPF SENSORS

The **robust silicon carbide construction** supports multiple regeneration cycles in the harshest conditions



## KNOCK SENSORS

Utilise **piezoelectric crystals** to generate voltage when they detect engine knock

## O2 SENSORS

Feature a **planar sensing element**, with an integrated **heater** and **patented poison protection coating**, providing enhanced reliability during operation



## MAP SENSORS

Feature a **silicon wafer**, which flexes during pressure variations, delivering an **accurate reading** to the ECU

## NOx SENSORS

**Three sensing element cavities** ensure the measurement of **“pure” NOx**, enhancing the accuracy of the reading



## OIL PRESSURE SWITCHES

Accurately sensing changes in oil pressure ensures **optimum lubrication** of engine components, **reducing engine wear**

## ABS SENSORS

Utilises **weather-pack connectors** to repel **dirt, moisture** and **other contaminants**, protecting against corrosion with plated pins



ENGINE

EMISSIONS

SAFETY

LEADING EUROPEAN COVERAGE

MAF

**180M+**  
VEHICLES IN  
OPERATION

O2

**230M+**  
VEHICLES IN  
OPERATION

DPF

**120M+**  
VEHICLES IN  
OPERATION

ABS

**270M+**  
VEHICLES IN  
OPERATION

CRANKSHAFT

**280M+**  
VEHICLES IN  
OPERATION

PROVIDING THE BEST COVERAGE AMONGST OEM'S!

WORKSHOP SOLUTIONS

HOW-TO VIDEOS

TECHNICAL TIPS & ARTICLES

DIAGNOSTICS

TRAINING

PREMIER DATA SUPPLIER

ARE YOU READY TO BE A MASTER OF MOTION?

# Delphi

delphiaftermarket.com



PHINIA

