



INA Service Info

Deflection pulley 532 0521 10

Material change

Manufacturer: Tata

Models: Aria, Safari, Sumo Grande, Xenon

Engine: DW12DD

Part no.: 532 0521 10

For current listing refer to catalogue media



Fig. 1: Old design with plastic running surface

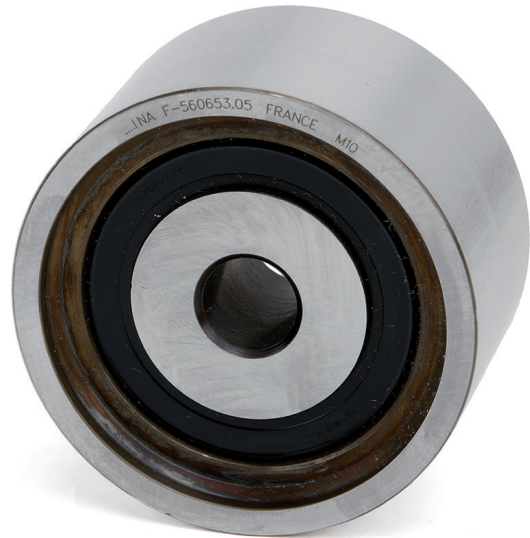


Fig. 2: New design with steel running surface

As part of the continuous development of our products, the running surface of deflection pulley 532 0521 10 has been changed from plastic to steel. In addition, the running surface of the new design is 3.8mm wider.

During the conversion phase, stocks may become mixed with both new and old design parts.

Both deflection pulleys meet the technical specifications and can be used on the listed vehicles without restriction.

Please observe the vehicle manufacturer specifications!

You want more? We can help!

Phone: +44 (0) 1432 264 264

Fax: +44 (0) 1432 375 760

aftermarket.uk@schaeffler.com

www.repxpert.co.uk